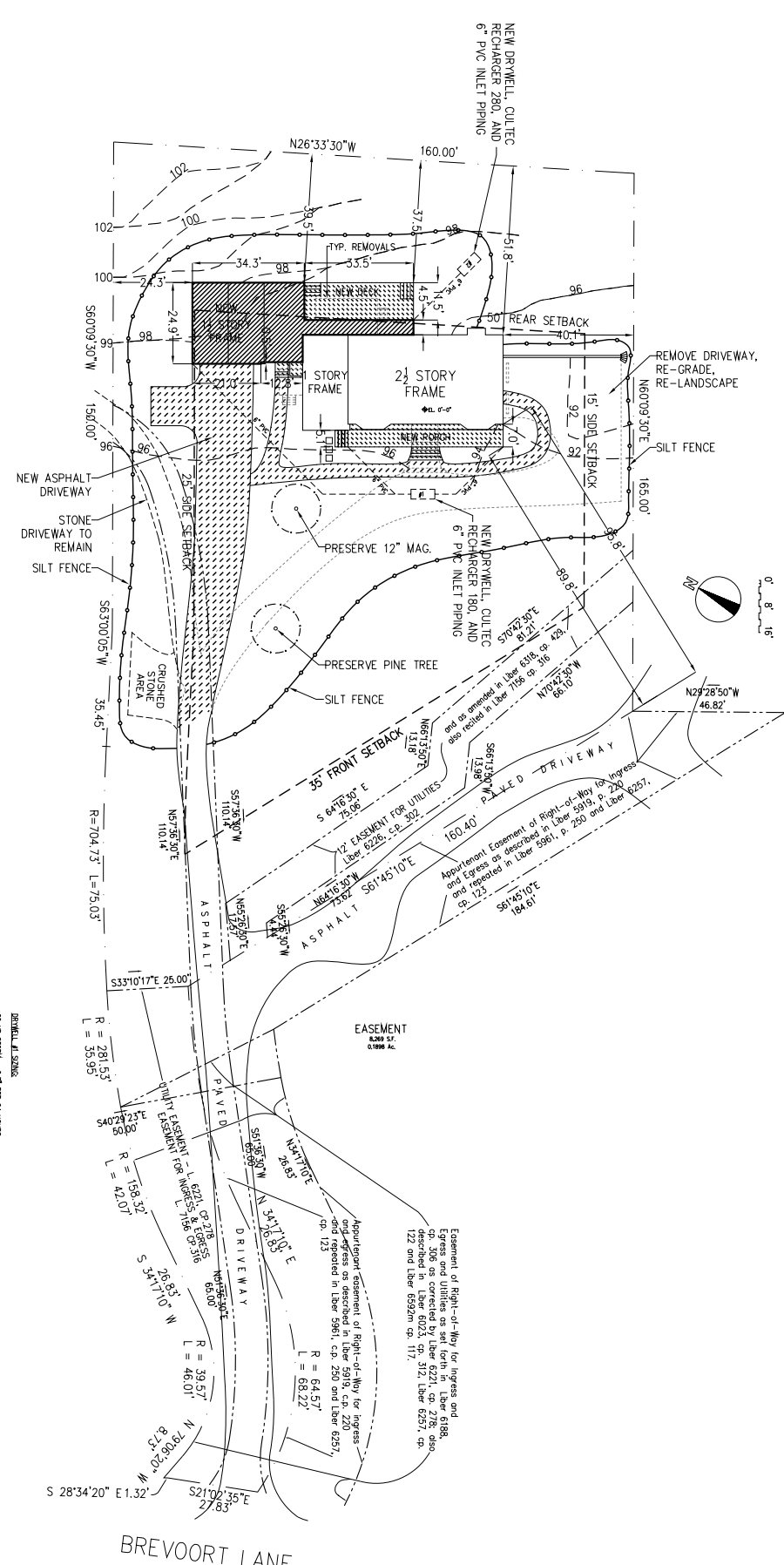


SITE PLAN



EASEMENT

8,240 SF
0.1886 AC.

Easement of Right-of-Way for Ingress and Egress as described in Liber 5961, p. 250 and Liber 6257, qp. 123

Easement of Right-of-Way for Ingress and Egress as described in Liber 6221, qp. 218, also described in Liber 6023, qp. 312, Liber 6297, qp. 123 and Liber 6325m qp. 117.

Appurtenant Easement of Right-of-Way for Ingress and Egress as described in Liber 5919, qp. 220 and reported in Liber 5961, p. 250 and Liber 6257, qp. 123

Appurtenant Easement of Right-of-Way for Ingress and Egress as described in Liber 5919, qp. 220 and reported in Liber 5961, p. 250 and Liber 6257, qp. 123

- DETAILS AT STONE**
- 24 in STONE - 8" x 8" PER 24 HOURS
 - TOTAL VOLUME WATER STORED = 580 x 8.7/2 = 275.5 CF/DAY
 - PERCOLATION RATE = 2.0 CF/F²/DAY
 - RECHARGE RATE = 2.0 CF/F²/DAY
 - VOLUME OF STONE (46" x 48" x 24") = 1477 CF
 - UNIT PERCOLATION RATE = 1.0 CF/F²/DAY
 - VOLUME OF STONE REQUIRED UNIT = 2011 CF
 - UNIT PERCOLATION RATE = 1.0 CF/F²/DAY
 - VOLUME OF STONE REQUIRED UNIT = 2278 CF/DAY
 - TOTAL WATER STORED = 253 x 462 = 117,006 CF/DAY
 - TOTAL WATER STORED = 483 x 671 = 324,111 CF/DAY
- 2011 CF/DAY PROVIDED > 275.5 CF/DAY REQUIRED

DETAILS AT SAND

 - 24 in STONE - 8" x 8" PER 24 HOURS
 - TOTAL VOLUME WATER STORED = 721 x 8.7/2 = 3125.5 CF/DAY
 - PERCOLATION RATE = 2.0 CF/F²/DAY
 - RECHARGE RATE = 2.0 CF/F²/DAY
 - VOLUME OF STONE (46" x 48" x 24") = 1477 CF
 - UNIT PERCOLATION RATE = 1.0 CF/F²/DAY
 - VOLUME OF STONE REQUIRED UNIT = 2011 CF
 - UNIT PERCOLATION RATE = 1.0 CF/F²/DAY
 - VOLUME OF STONE REQUIRED UNIT = 2278 CF/DAY
 - TOTAL WATER STORED = 253 x 462 = 117,006 CF/DAY
 - TOTAL WATER STORED = 483 x 671 = 324,111 CF/DAY

3811 CF/DAY PROVIDED > 3125.5 CF/DAY REQUIRED

- AREAS OF SOIL & NEAR DRIVELAYS & WALLS**
- OLD MEAT OF SHREVEY & HAWES = 29728 SF
 - NEW MEAT OF SHREVEY & HAWES = 22700 SF
 - NEW MEAT < OLD MEAT, THEREFORE NO ADDITIONAL SURFACE WATER STORAGE REQUIRED
- AREAS OF SOIL & NEAR DRIVELAYS & WALLS**
- OLD MEAT OF SHREVEY & HAWES = 29728 SF
 - NEW MEAT OF SHREVEY & HAWES = 22700 SF
 - NEW MEAT < OLD MEAT, THEREFORE NO ADDITIONAL SURFACE WATER STORAGE REQUIRED