

**SECTION 2: @ N. CONC. & NEW TRENCH DRAIN.**

**NOTES:**

- AT JOINT OVER EXIST. RET. WALL, PROVIDE THE FOLLOWING:
  - 1" HIGH "CONIFLEX" PREMOULDED FIBER EXP. "JT. FILLER" BY MASONITE
  - STRUCTURAL SILICONE JOINT SEALANT, "WARO SILICONE SEALANT," BY WATSON BOWMAN ACME CORP.
  - CONT. PVC WATERSTOP, "RETROFIT," CAT. #RFB18 BY 80 METALS PRODUCTS APPLIED TO THE EXISTING WALL.
  - 20 #4 @ 12" OC. CONT. ALTERNATE LAP SPICES.
- JOINT SEALANT: USE TYPE E WATERSTOP, SILICONE SEALANT, & 1" PREMOULDED DOP BOARD.
- FOR SHEET MEMBRANE INSTALLATION TYP. DETAILS, SEE SHT. 3. CONTINUE MEMBRANE OVER BOTH SIDES OF TRENCH WHERE SLAB ON GRADE IS PROVIDED. AT FACE OF TRENCH INSTALL 3" SLAB BASE COURSE, PER MANUF. RECOMMENDATIONS.
- TRENCH DRAIN WATERPROOFING SYSTEM: "RETROFIT 5000" w/ HYDROCOU DRAINAGE COMPOSITE, LIQUID BUTYLTHENE MASTIC, BY GRACE CORP.

**SECTION 2A: NEW TRENCH DRAIN.**

**NOTE:**

- PROVIDE BUILT-UP STEEL GRATING SEAT.
- COAT INTERIOR FACES OF 3/4" THK. PLATE & EMBEDDED HEADED STUD w/ EPOXY COATING.
- GRATE SEATS SHALL BE ASSEMBLED IN SHOP, OF 3/4" THK. BUILT-UP STEEL SECTION, ASTM A888 MATERIAL, & HOT DIPPED GALVANIZED ZINC COATING.

**SECTION 2B: STEEL GRATING PLAN @ NEW TRENCH DRAIN.**

**NOTE:**

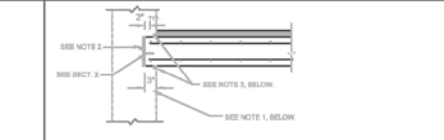
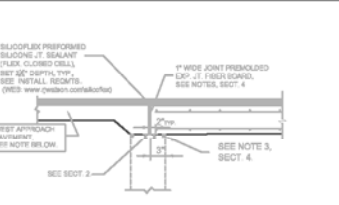
- HEAVY DUTY GRATING MATERIAL THICKNESS:
  - BEARING BARS: 3/4" W x 1 1/2" D, SPACED @ 15/16" OC.
  - CROSS BARS: 1/2" W x 1" D, SPACED @ 2" OC.
- H-15 TRUCK WHEEL LOAD RATING.
- GRATING SHALL BE HOT DIPPED GALVANIZED ZINC COATED.
- THE GRATING SELECTED SHALL MEET ADA STANDARD WHEEL CHAIR REQUIREMENT.
- THE OPEN ENDS OF THE GRATING SHALL BE BANDED.

**SECTION 1: @ PARAPET & FASCIA (GEOMETRY).**

**NOTES:**

- DISCONTINUE THE DRIP GROOVE DETAILING AS FOLLOWS:
  - 3" FROM THE FACE OF RET WALLS.
  - 3" FROM THE DECK JT. ADJ. TO THE EAST RET. WALL.
  - 1" FROM DECK JT. ON THE DOWNHILL SIDE ADJ. TO THE WEST RET. WALL.
- THE DRIP GROOVE SHALL BE CONT. OVER THE PIERS.
- FOR TYP. SLAB REINF., SEE SECT. #6.

**SECT. 1a: ENLARGED PARAPET & FASCIA DETAIL.**



**SECTION 3: DECK SUPPORT @ W. CONC. WALL.**

**NOTES:**

**WEST APPROACH PAVEMENT:**

EXCAVATE TO EXIST. SUB-BASE & PAVEMENT. INSTALL THE FOLLOWING PAVEMENT, IN 2" HIGH LIFTS, TO 95% PROCTOR DENSITY.

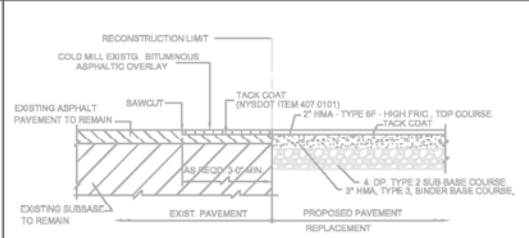
- 4" NYSDOT TYPE 2 SUBBASE
- 3" NYSDOT HMA, TYPE 3, BINDER COURSE
- 2" HMA, TYPE 8F, TOP COURSE

FOR BALANCE OF NOTES, SEE SECT. 4SH-T. 7.

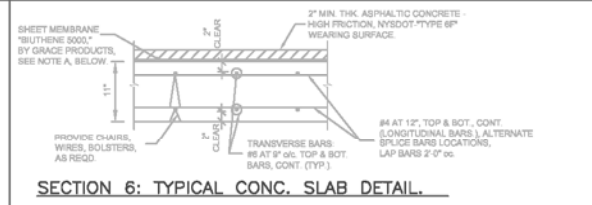
**SECTION 4: DECK SUPPORT @ E. CONC. WALL.**

**NOTES:**

- IF SLAB RECESS WAS PROVIDED IN WALL REMOVE EXISTING SLAB FROM RECESS w/ CARE SO THAT RECESS IS NOT DAMAGED. DO NOT CUT, OR DAMAGE, EXISTING REINFORCEMENT EXTENDING FROM WALL INTO SLAB. DO NOT USE CHIPPING HAMMER AGAINST EXISTING REINFORCEMENT. REMOVE CONCRETE BORDER TO EXISTING REINFORCEMENT BY STRIKING IT WITH A CONCRETE HAMMER.
- AT JUNCTION BETWEEN THE DECK & EXISTING CONC. WALL, PROVIDE: 1" WIDE "CONIFLEX" PREMOULDED FIBER EXP. "JT. FILLER" BY MASONITE
- WHERE INDICATED IN SECTION, SAWCUT THE EXISTING WALL TO ACCOMMODATE 1/2" x 1/2" JOINT SEALANT: "WARO SILICONE SEALANT," BY WATSON BOWMAN ACME CORP.
- FOR SHEET MEMBRANE INSTALLATION DETAILS, SEE TYP. DETAILS, SHT. 8.
- FOR TYP. SLAB REINF. DETAIL, SEE SECT. 8SH-T. 7.
- PROVIDE TACK COAT BETW. ALL LAYERS, TYP., ON DECK & APPROACHES.



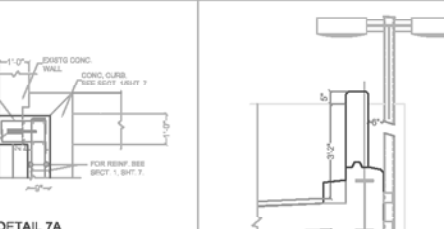
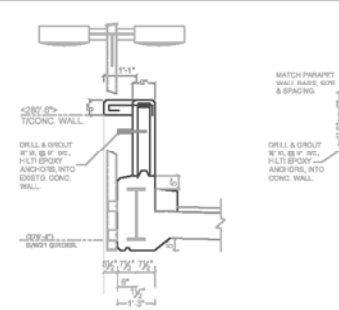
**SECTION 5: TRANSITION PAVEMENT DETAIL (OPP. HAND)**



**SECTION 6: TYPICAL CONC. SLAB DETAIL.**

**NOTES:**

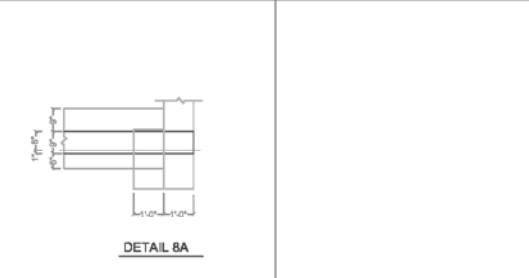
- APPLY MEMBRANE SHEET WATERPROOFING SYSTEM "BUTHTHENE 5000" BY GRACE PRODUCTS. SHEET MEMBRANE REQUIRES THAT THE SURFACE BE TROWELED SMOOTH FOLLOWING CONC. PLACEMENT, BE FREE OF INSTALLATION & FINISHING DEFECTS, & PRIMED WITH MANUFACTURER'S DECK PREPARATION SURFACE TREATMENTS. THE INSTALLATION OF THE CARPORT DECK & PREPARATION SHALL MEET THE STANDARDS SET FORTH BY THE SHEET MEMBRANE MANUFACTURER. DECK SURFACE SHALL MEET THE STANDARDS SET FORTH BY THE MANUFACTURER. THE CONTRACTOR SHALL INSTALL THE WATERPROOFING MEMBRANE & ITS AUXILIARY PRODUCTS, AS REQUIRED BY THE MANUFACTURER. THE SPECIFICATIONS FOR THIS PRODUCT SHALL BE INCORPORATED AS PART OF THE CONTRACT DOCUMENTS, AND FURNISHED TO THE CONTRACTOR.
- FOR SHEET MEMBRANE INSTALLATION DETAILS, SEE SHT. #6.
- FOR CONCRETE POUR SCHEDULE & THE USE OF SPECIALIZED INSERTS & ADDITIONAL REBAR REQUIRED @ EXPANSION, CONTRACTION JOINTS, SEE SHT. #6.



**SECTION 7: JUNCTION BETW. FASCIA & E. CONC. WALL.**

**NOTE: FOR REINF. SEE SECTS.**

- #1: TYP. PARAPET & GIRDER ENCASUREMENT
- #2: TYP. SLAB DETAIL
- #7: WEST APPROACH END CONDITION



**SECTION 8: JUNCTION BETW. FASCIA & W. CONC. WALL.**

**NOTE: FOR REINF. SEE SECTS.**

- #1: TYP. PARAPET & GIRDER ENCASUREMENT
- #2: TYP. SLAB DETAIL
- #7: WEST APPROACH END CONDITION

LEGEND
① INSTALL NEW CARPORT DECK, FOR ADD. INFO, SEE TYP. SLAB DETAIL, SECT. 5-B.
② REMOVED EXISTG. GUARD RAIL & STL. PORTS, TO BE REPLACED BY 6\"/>

DATE	ISSUE/REVISION
GRIGG & DAVIS ENGINEERS, P.C. 21 Crossway Scarsdale, NY 10583 TEL/FAX: 914-725-5095 e-mail: gdengineers@optonline.net	
<b>High Point of Hartsdale Condo. III - Building #500 Reconstruction of Parking Carport Garage</b>	
<b>SECTIONS &amp; DETAILS</b>	
DATE: 10/10/03	7 OF 10
SCALE: AS NOTED.	