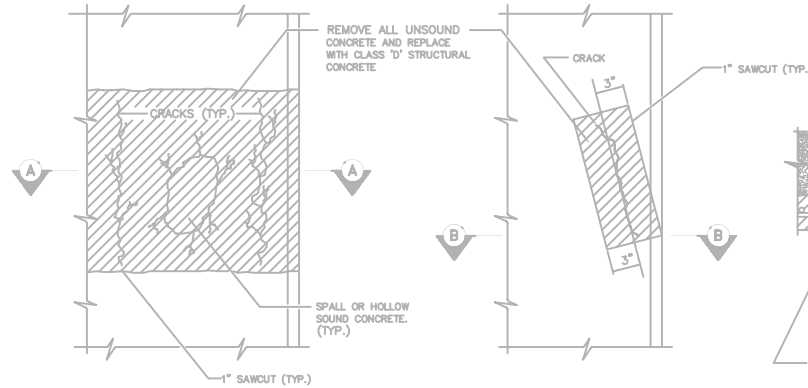


SECTION

TYPICAL CONCRETE SURFACE REPAIR SECTION

N.T.S.

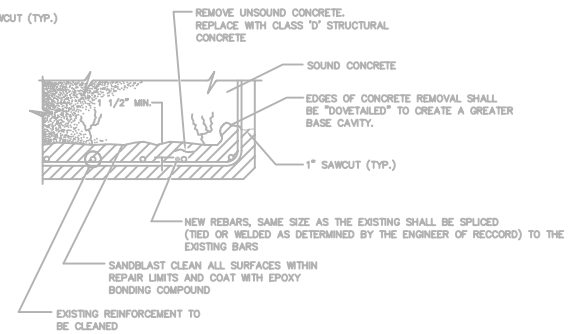


CONCRETE DETERIORATION REPAIR

CONCRETE CRACK REPAIR

CONCRETE SURFACE REPAIR

N.T.S.



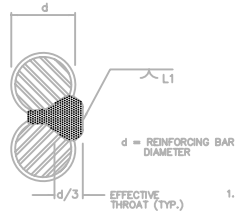
SECTION A-A
SECTION B-B SIMILAR



PLAN

LAPPED, TIED SPLICE

N.T.S.



SINGLE FLARE V - GROOVE WELD

CONCRETE REPAIR NOTES:

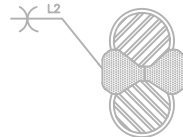
- FOR GENERAL NOTES SEE SH. 5
- NOTE: THE CONTRACTOR SHALL APPLY A PENETRATING SEALER FOR CONCRETE SHALL BE APPLIED TO ALL EXPOSED RETAINING WALL SURFACES, WITH IN THE LIMITS OF THE RECONSTRUCTION AREA.
- THE EXTENT OF RETAINING WALL REPAIR SHALL BE DETERMINED IN THE FIELD INSPECTION WITH ENGINEER OF RECORD & CONTRACTOR. ALL OF THE MAJOR AREAS, KNOWN TO SHALL BE VIDEO TAPE RECORDED BY THE CONTR. & EOR, PRIOR TO CONDUCTING ANY WORK. DETERIORATION REPAIRS WILL BE PAID FOR UNDER SEPARATE PRICE BID FOR THIS WORK.
- THE ANTICIPATED ANY EXISTING RETAINING WALLS REQUIRING REPAIRS BEYOND THOSE IDENTIFIED AS PREEXISTING, SHALL BE REPAIRED AT NO ADDITIONAL COST TO THE OWNER.
- DETERIORATED REINFORCEMENT SHALL BE REPLACED IN KIND, ITEM 556.0201, AND HAVE A MINIMUM LAP OF 30 BAR DIAMETERS OR A WELDED SPLICE SHALL BE PROVIDED (SEE WELDED SPLICE DETAIL THIS DRAWING), IF WELDED, WELDERS SHALL BE QUALIFIED IN ACCORDANCE AWS.
- IMMEDIATELY PRIOR TO THE APPLICATION OF NEW CONCRETE, THE SURFACES SHALL BE SANDBLAST CLEANED IN ACCORDANCE WITH THE SPECIFICATIONS AND COATED WITH EPOXY BONDING COMPOUND.
- AT ALL CONCRETE PIER REMOVAL LOCATIONS, THE MINIMUM DEPTH OF REMOVAL SHALL BE A DEPTH NO LESS THAN 1 1/2" FROM THE REARMOST POINT OF EXPOSED REINFORCEMENT BAR, OR TO SOUND CONCRETE, WHICHEVER IS GREATER.
- WHERE CONCRETE REMOVAL AND REPLACEMENT NECESSITATES ADJACENT SEPARATE CONCRETE PLACEMENTS, CONCRETE REMOVAL SHALL EXTEND A MINIMUM OF ONE FOOT BEYOND THE LIMIT OF THE FIRST CONCRETE PLACEMENT. THIS CLEAR SPACE WILL MINIMIZE THE NEGATIVE IMPACT OF THE ADJACENT CONCRETE REMOVAL OPERATION ON THE RECENTLY COMPLETED REPAIR.
- IN SEQUENCING WORK, THE CONTRACTOR SHALL NOT BEGIN CONCRETE REMOVAL AT A LOCATION ADJACENT TO A COMPLETED REPAIR UNTIL A MINIMUM OF 7 CURING DAYS HAVE PASSED.
- THE EXTENT OF CONCRETE REMOVAL FOR ANY COMPONENT SHALL NOT JEOPARDIZE ITS STRUCTURAL INTEGRITY. THE CONTRACTOR SHALL SUBMIT, PRIOR TO COMMENCEMENT OF THIS WORK, A REMOVAL PLAN AND SCHEDULE FOR E.I.C. APPROVAL.
- IN CASES, WHERE UNSOUND CONCRETE EXTENDS BEYOND 5" DEPTH, REMOVE UP TO SOUND CONCRETE AND REPLACEMENT WITH CLASS A CONCRETE.



PLAN

WELDED SPLICE

N.T.S.



DOUBLE FLARE V - GROOVE WELD

SECTION C-C

N.T.S.

MINIMUM WELD LENGTHS		
BAR SIZE	SINGLE FLARE V-GROOVE WELD	DOUBLE FLARE V-GROOVE WELD
5	4"	2 1/2"
6	4 1/2"	2 3/4"
7	5"	3"
8	5 1/2"	3 1/4"
9	6"	3 1/2"

DATE	ISSUE/REVISION

GRIGG & DAVIS ENGINEERS, P.C.
21 Crossway
Scarsdale, NY 10583
TEL/FAX: 914-725-5095
e-mail: gdengineers@optonline.net

High Point of Hartsdale
Condo. III - Building #500
Parking Deck Repairs

CONCRETE REPAIR DETAILS

Sheet 9 of 10